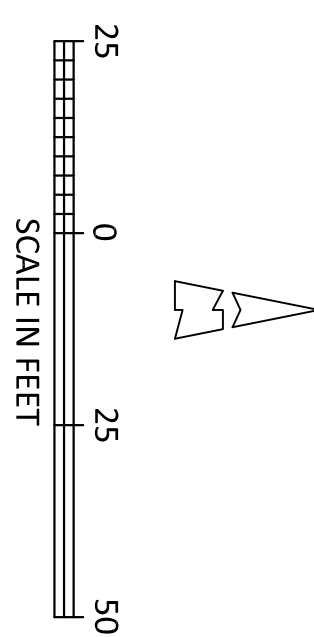


David A. Evans, III, PE, PLS



David A. Evans, III, PE, PLS
 Professional Engineers & Professional Land Surveyors
 102 Hickory Lane
 Batesville, Mississippi 38606
 Phone: (662) 902-5005
 Fax: (662) 578-8081
 email: david.a.evans@bellsouth.net

Drawn By
 DAE
 Checked By
 DAE

**Fairfield Inn and Suites by Marriott
 Batesville, Mississippi**

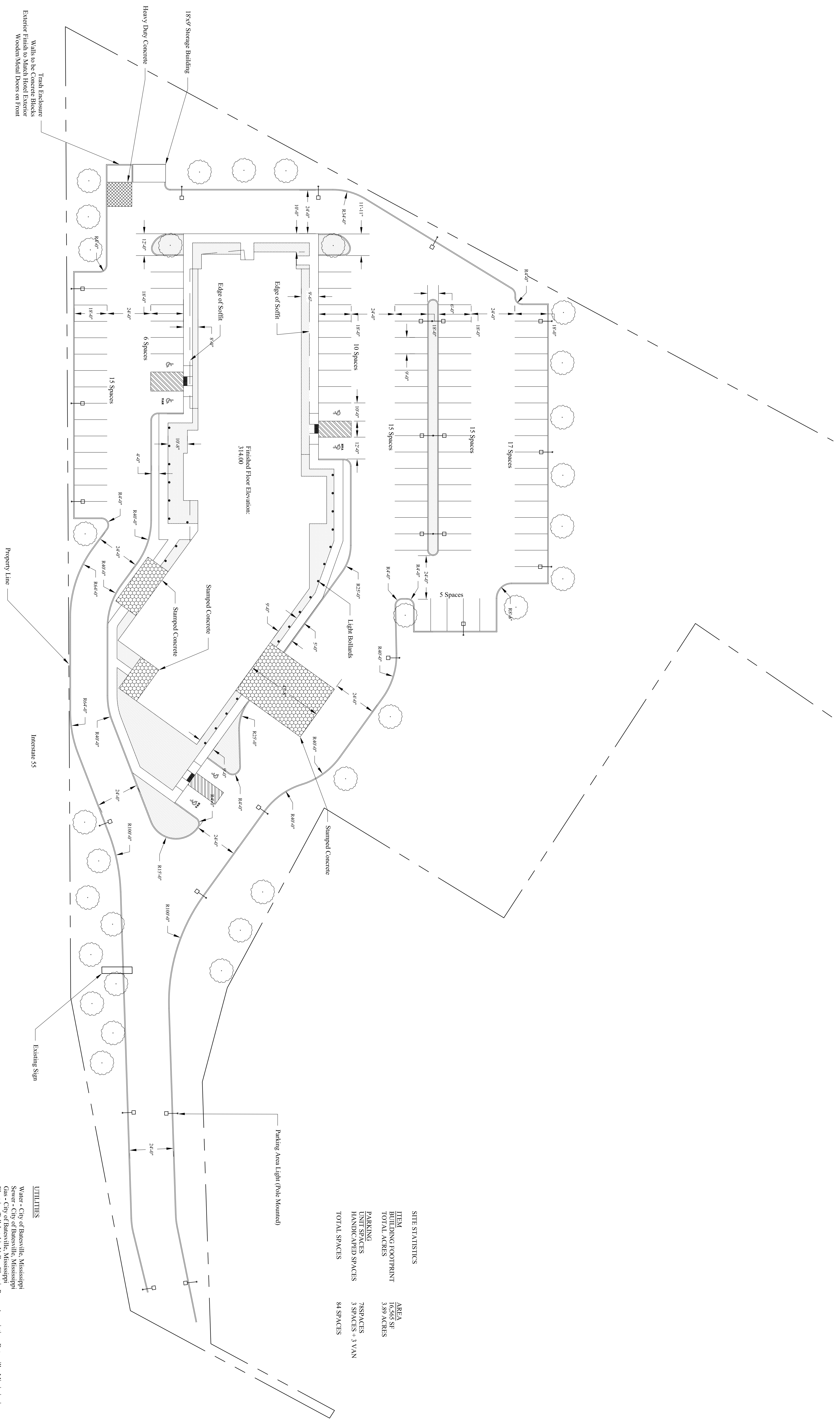
Existing Site Conditions

Project Number
 SP-MS(54)-0901-15

Date:
 01/19/2016

C 1.0

Sheet No.



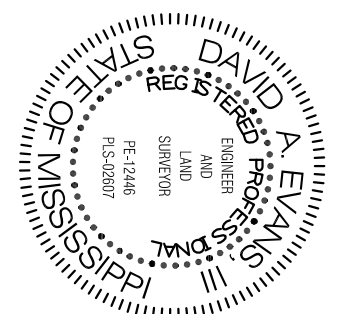
SITE STATISTICS

ITEM	AREA
BUILDING FOOTPRINT	16,066 SF
TOTAL ACRES	5.97 ACRES
PARKING	
UNIT SPACES	78 SPACES
HANDICAPPED SPACES	3 SPACES + 3 VAN
TOTAL SPACES	84 SPACES

UTILITIES

Water - City of Batesville, Mississippi
 Sewer - City of Batesville, Mississippi
 Gas - City of Batesville, Mississippi
 Electric - Tallahatchie Valley Electric Power Association, Batesville, Mississippi

Trash Enclosure
 Walls to be Concrete Blocks
 Exterior Finish to Match Hotel Exterior
 Wood/Metal Doors on Front



David A. Evans, III, P.E., P.L.S.



David A. Evans, III, PE, PLS
 Professional Engineers & Professional Land Surveyor

102 Hickory Lane
 Batesville, Mississippi 38606
 Phone: (662) 902-5055
 Fax: (662) 578-8081
 email: david.a.evans@bellsouth.net

Drawn By
 DAE
 Checked By
 DAE

Fairfield Inn and Suites by Marriott
Batesville, Mississippi

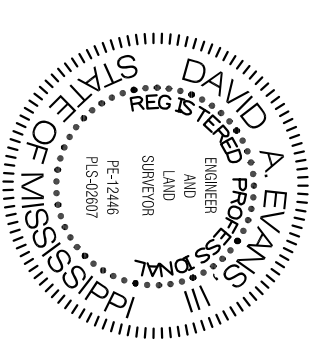
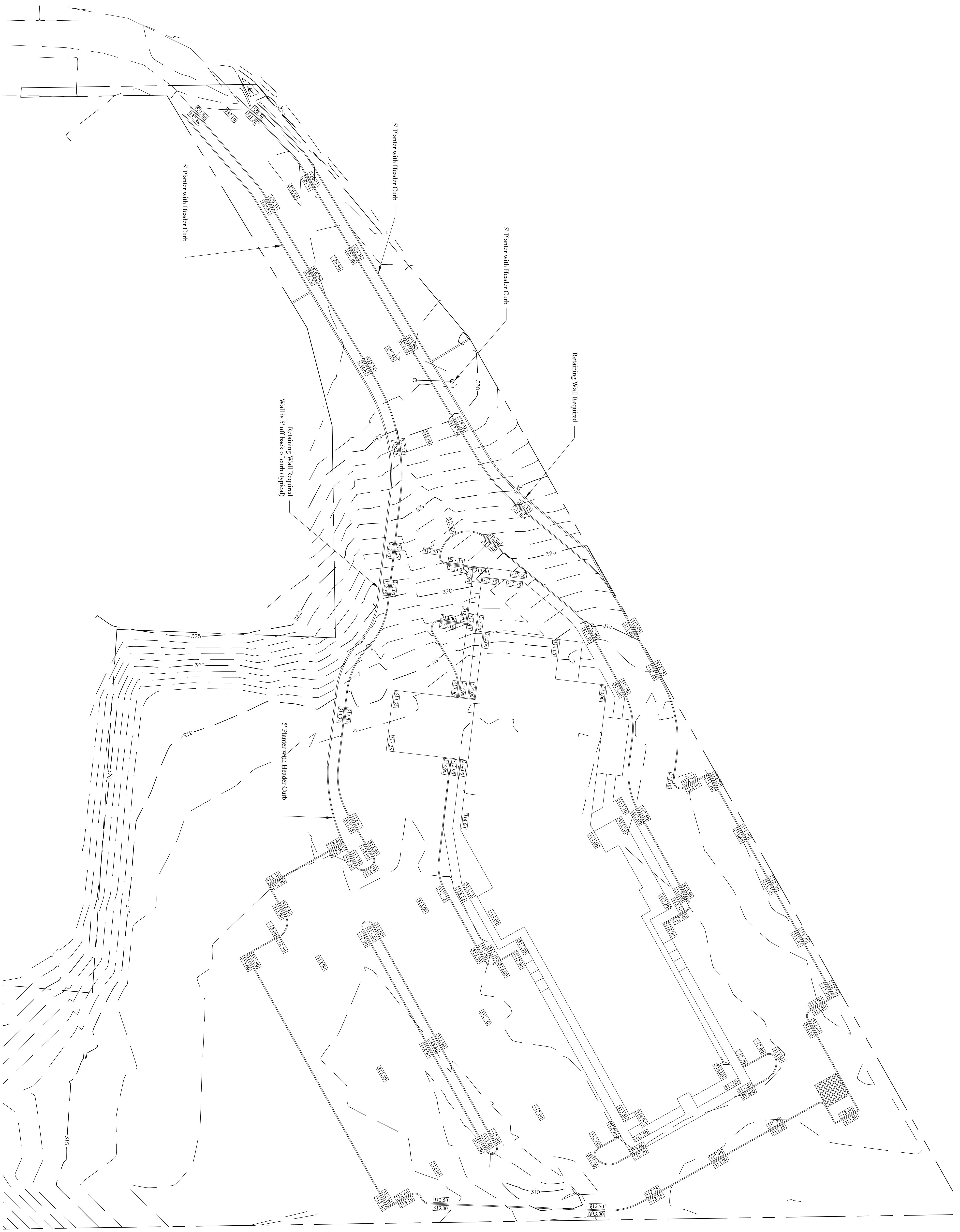
Site Plan

Project Number
 SP-MS(54)-0901-15

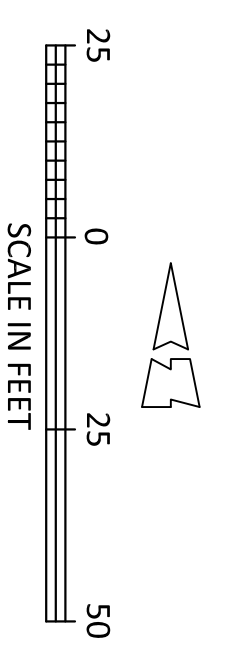
Date:
 01/19/2016

C 2.0

Sheet No.



David A. Evans, III, PE, PLS



C 3.0

David A. Evans, III, PE, PLS
 Professional Engineers & Professional Land Surveyor
 102 Hickory Lane
 Batesville, Mississippi 38606
 Phone: (662) 902-5005
 Fax: (662) 578-8081
 email: david.a.evans@bellsouth.net

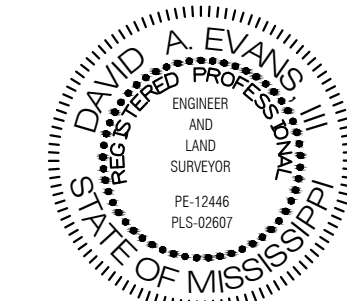
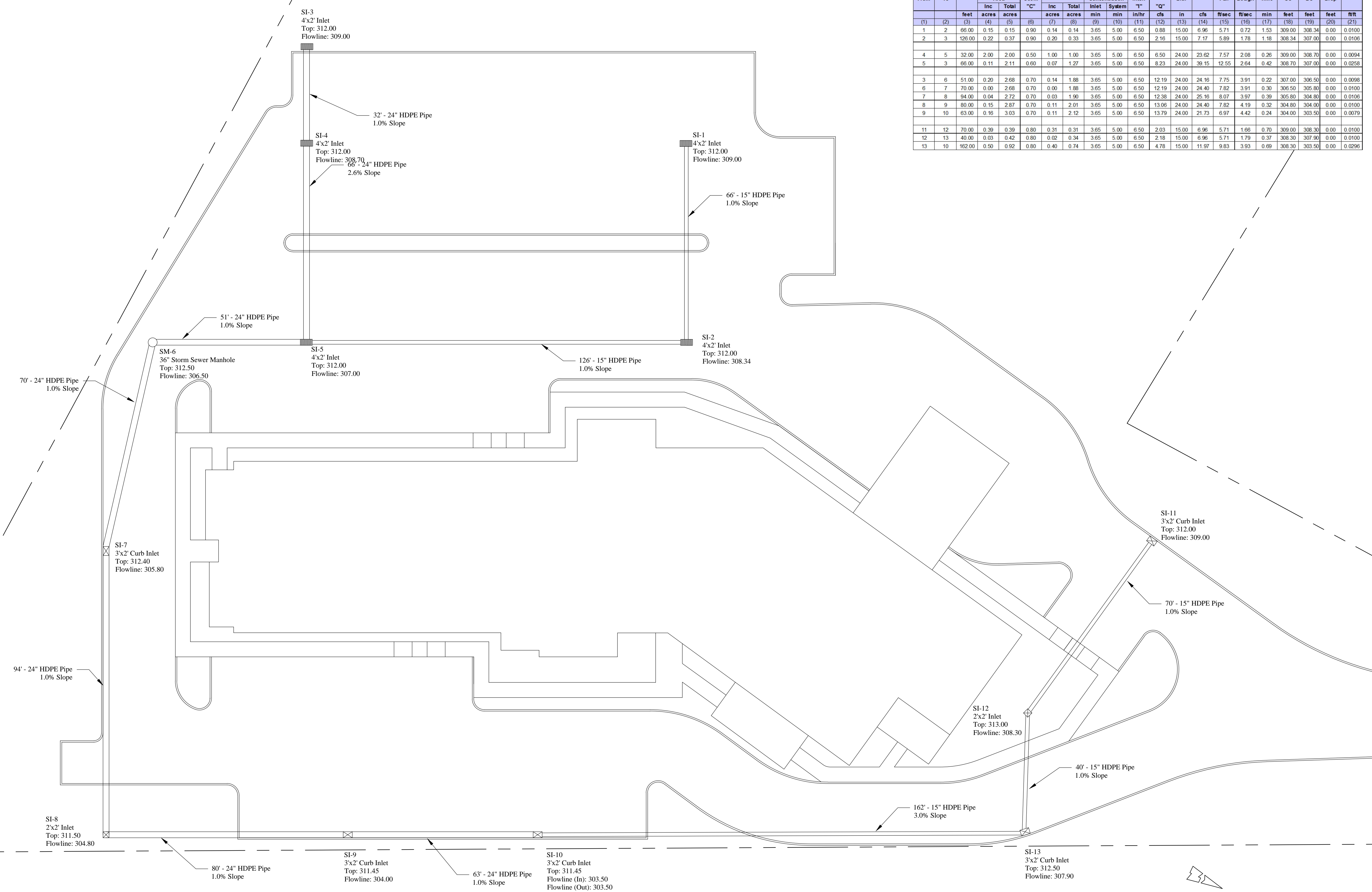
Drawn By
 DAE
 Checked By
 DAE

Fairfield Inn and Suites by Marriott
Batesville, Mississippi

Site Grading Plan	
Project Number SP-MS(54)-0901-15	Date: 01/19/2016

Site Grade This Area To Drain To Inlet

STORM DRAIN COMPUTATION SHEET												Project		SP-MS(54)-0901-15 - Fairfield Inn		n= 0.012 Date: 1/19/2016				
Struct. ID		Length	Drainage Area		Runoff Coeff.	Area x "C"		Time of Concentration		Rain Inten.	Runoff	Pipe		Velocity		Sec. Time	Invert Elev.		Crown Drop	Slope
From	To	feet	Inc	Total	"C"	Inc	Total	min	min	In/hr	cfs	in	cfs	f/Sec	f/Sec	min	US	DS	feet	ft/ft
(1)	(2)	(3)	(4)	(5)	(6)	(7)	(8)	(9)	(10)	(11)	(12)	(13)	(14)	(15)	(16)	(17)	(18)	(19)	(20)	(21)
1	2	66.00	0.15	0.15	0.90	0.14	0.14	3.65	5.00	6.50	0.88	15.00	6.96	5.71	0.72	1.53	309.00	308.34	0.00	0.0100
2	3	126.00	0.22	0.37	0.90	0.20	0.33	3.65	5.00	6.50	2.16	15.00	7.17	5.89	1.78	1.18	308.34	307.00	0.00	0.0106
4	5	32.00	2.00	2.00	0.50	1.00	1.00	3.65	5.00	6.50	8.50	24.00	23.02	7.57	2.08	0.28	309.00	308.70	0.00	0.0094
5	3	66.00	0.11	2.11	0.60	0.07	1.27	3.65	5.00	6.50	8.23	24.00	39.15	12.55	2.64	0.42	308.70	307.00	0.00	0.0258
3	6	51.00	0.20	2.68	0.70	0.14	1.88	3.65	5.00	6.50	12.19	24.00	24.16	7.75	3.91	0.22	307.00	306.50	0.00	0.0098
6	7	70.00	0.00	2.68	0.70	0.00	1.88	3.65	5.00	6.50	12.19	24.00	24.40	7.82	3.91	0.30	306.50	306.80	0.00	0.0100
7	8	94.00	0.04	2.72	0.70	0.03	1.90	3.65	5.00	6.50	12.38	24.00	25.16	8.07	3.97	0.39	305.80	304.80	0.00	0.0106
8	9	80.00	0.15	2.87	0.70	0.11	2.01	3.65	5.00	6.50	13.06	24.00	24.40	7.82	4.19	0.32	304.80	304.00	0.00	0.0100
9	10	63.00	0.16	3.03	0.70	0.11	2.12	3.65	5.00	6.50	13.79	24.00	21.73	6.97	4.42	0.24	304.00	303.50	0.00	0.0079
11	12	70.00	0.39	0.39	0.80	0.31	0.31	3.65	5.00	6.50	2.03	15.00	6.96	5.71	1.66	0.70	309.00	308.30	0.00	0.0100
12	13	40.00	0.03	0.42	0.80	0.02	0.34	3.65	5.00	6.50	2.18	15.00	6.96	5.71	1.79	0.37	308.30	307.90	0.00	0.0100
13	10	162.00	0.50	0.92	0.80	0.40	0.74	3.65	5.00	6.50	4.78	15.00	11.97	9.83	3.93	0.69	308.30	303.50	0.00	0.0296



David A. Evans, III, PE, PLS



Site Drainage Plan

Fairfield Inn and Suites by Marriott
Batesville, Mississippi

Drawn By
DAE

Professional Engineers & Professional Land Surveyor
David A. Evans, III, PE, PLS

Sheet No.

C 4.0

Project Number
SP-MS(54)-0901-15

Date:
01/19/2016

102 Hickory Lane
Batesville, Mississippi 38606
Phone: (662) 902-5005
Fax: (662) 578-8081
email: david.a.evans@bellsouth.net

Site Grade This Area To Drain
To Inlet

Duplex Sump Sewer Pump Station
Pumps: SHP
Flow: 100 GPM
TH: 40 Feet
Top: 314.00
Bottom: 304.40
Flowline In: 310.30
Flowline Out: 310.00

36" Standard Manhole
Top: 313.75
Bottom: 310.75

Existing Electric Service Pole
Electric Service To Be Installed
Underground. Size To Be Determined
By Electrical Engineer

Relocate Existing Gas Meter

3" 90° Bend

8" 90° Bend

250' - 3" C-200 PVC Pipe (Water Supply)

250' - 8" C-900 PVC Pipe (Fire Protection)

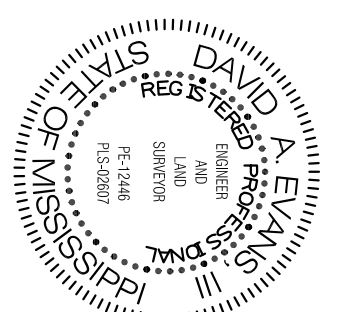
8" 90° Bend

8" Ductile Iron Tee, Mechanical Joint w/ Locking Glants
8" Gate Valve and Box
Coordinate Connection with the City of Batesville

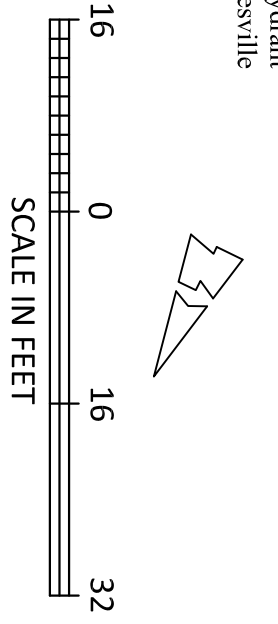
8"x6" Ductile Iron Tee, Mechanical Joint w/ Locking Glants
6" Gate Valve and Box
5' - 6" C-900 PVC Pipe
Fire Hydrant
Coordinate Connection with the City of Batesville

Existing Water Supply

Existing Water Supply



David A. Evans, III, PE, PLS
[Signature]



David A. Evans, III, PE, PLS
Professional Engineers & Professional Land Surveyor

102 Hickory Lane
Batesville, Mississippi 38606
Phone: (662) 502-5005
Fax: (662) 578-8081
email: david.a.evans@bellsouth.net

Drawn By
DAE

Checked By
DAE

Fairfield Inn and Suites by Marriott Batesville, Mississippi

Site Utility Plan

Project Number
SP-MS(54)-0901-15

Date:
01/19/2016

C 5.0

Sheet No.